

### ELECTRICAL

RESISTANCE RANGE	SEE CHART
RESISTANCE TOLER.	±5%
NOISE	100 OHM MAX
INSULATION RESISTANCE	100 MEGOHMS AT 500 VDC
DIELECTRIC STRENGTH	900VDC MIN
END RESISTANCE	1 OHM OR 0.1% OF TOTAL

### MECHANICAL

STOP STRENGTH	10 LBS MIN
FRICTION	21 OZ.MAX
LIFE	2,000,000 STROKES MIN.

### ENVIRONMENTAL

OPERATING TEMPERATURE	-20°C TO +60°C
-----------------------	----------------

### NON-STANDARD OPTIONS

RESIS.TOL ±3%
MACHINED SHAFTS
EXTRA TAP
HYBRID ELEMENT
CONDUCTIVE PLASTIC ELEMENT
SPECIAL LINEARITY

### MODEL NO.'S.

### SHAFT STYLES

LO20-(STROKE)-(RES.)	PLAIN
LO20P " "	
LO20T " "	#10-32 THREAD

### RESOLUTION CHART

RESISTANCE DASH NO.	POWER RATING	10	25	50	100	200	500	1K	2K	5K	10K	20K	50K
LO20-15	0.5W	1.3%	1.2%	.87%	.90%	.72%	.63%	.44%	.39%	.29%			
LO20-50	0.75W		.42%	.34%	.26%	.21%	.21%	.17%	.14%	.10%	.08%		
LO20-100	1.0W			.21%	.16%	.13%	.14%	.11%	.08%	.06%	.05%	.04%	
LO20-200	2.0W				.10%	.08%	.06%	.07%	.05%	.04%	.03%	.025	.018
TEMPERATURE COEFFICIENT	±80 PPM/°C						±20 PPM/°C						

## WIREWOUND RESISTANCE ELEMENT

### TOLERANCES

XX = +/- .010" FRACT. = +/- 1/64"  
XXX = +/- .005" ANGLES = +/- 1/2°

ALL SPECIFICATIONS SUBJECT TO CHANGE WITHOUT NOTICE.

SCALE	NONE
DATE:	5-13-86
BY	
APPRV'D	BT
CODE IDENT:	19477

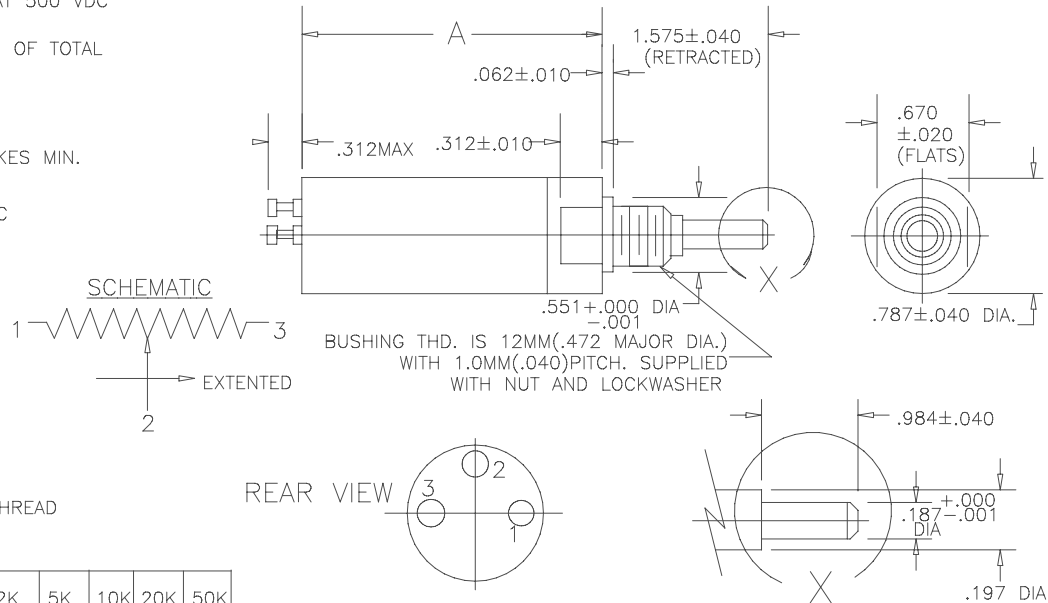
THIS DOCUMENT CONTAINS PROPRIETARY DATA  
OF POLARIS INDUSTRIAL ENTERPRISES, INC. NO  
DISCLOSURE, REPRODUCTION, OR USE OF ANY  
PART THERE OF MAY BE MADE EXCEPT BY  
WRITTEN PERMISSION.

### TITLE

## OIL FILLED LINEAR MOTION POTENTIOMETER

PART NO. LO20

REV. H BY BT DATE 10-20-99 ADDED LO20P



REAR VIEW

WEIGHT	DASH NO.	MECHANICAL STROKE±.06	ELECTRICAL STROKE±.04	RESISTANCE RANGE=OHMS	LINEARITY	±.040 A
.3LB.	-15	.630	.590	10 - 5K	±1.0%	3.94
.3LB.	-50	2.087	1.968	25 TO 20K	±0.7%	5.315
.35LB.	-100	4.055	3.937	50 TO 20K	±0.5%	7.283
.70LB.	-200	7.992	7.874	100 TO 80K	±0.5%	11.220



CARLSBAD  
CALIFORNIA

PART NO.

LO20

# Mouser Electronics

Authorized Distributor

Click to View Pricing, Inventory, Delivery & Lifecycle Information:

[ETI Systems:](#)

[LO20T-100-2K](#)